



Cold Blocker

Gas Fired Glass Front High Intensity
Ceramic Infrared Heater



*Innovation
in design*



*Bespoke
solutions
made easy*

Find Your perfect Heating Solution

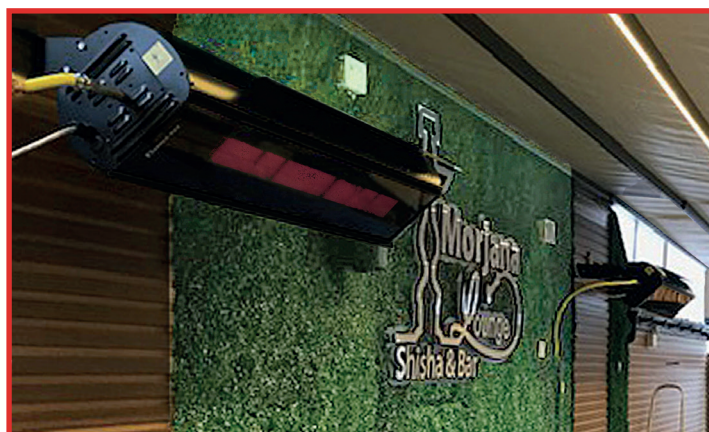
COLD BLOCKER Radiant Plaque Heater

Gas Fired High Intensity Ceramic Infrared Heater



Available in optional marine grade stainless steel

- Ideal for outdoor covered entertainment areas
- Two stage (high/low) burner
- Natural Gas or Propane
- Available in marine grade stainless steel
- CE Approved
- Rain resistant (IP44)
- Smooth, clean design with glass fascia
- Reduced top clearance to combustibles when fitted with optional heat shield
- Adjustable wall brackets available
- Best suited to permanent fixture applications
- Remote control available as an option



SPECIFICATION GUIDE - WB10CE

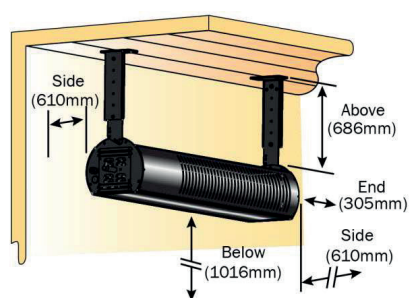
Heat Input	kW Hs	10.25
	2 Stage low fire kW Hs	7.0
	kW Hi	9.23
	2 Stage low fire kW Hi	6.3
Gas connection	BSP	½"
Maximum gas consumption	Nat gas G20 (m³/h)	1.05
	LPG G30 (m³/h)	0.38
Gas inlet pressure	mbar	Natural gas - 20mbar LPG - 37mbar
Supply voltage	V	230V 50Hz 1PH N & E 25W External fuse rating - 3A
Dimensions	mm	1219Long x 300 wide x 244 High
Weight	kg	22

RECOMMENDED MOUNTING HEIGHTS - WB10CE

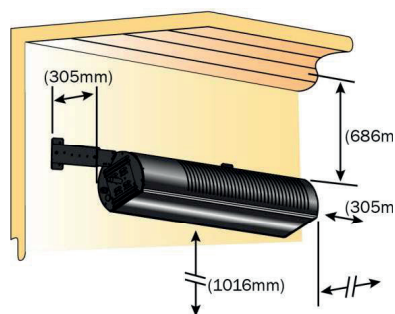
Angle	0°	5° to 30°	30° to 60°
Height	2.4 to 3.4m	2.15 to 2.7m	2.15 to 2.44m

Clearances To Combustibles

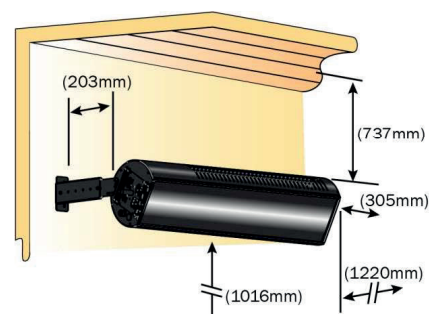
Without Optional Heat Shield - Horizontal



Horizontally Mounted



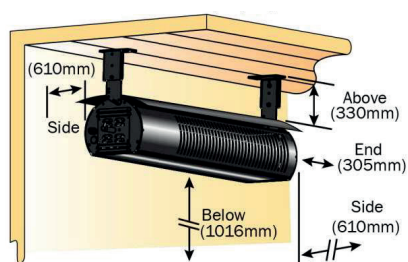
Angled Mounted 5° to 30°



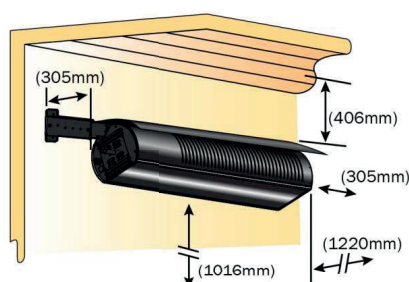
Angled Mounted 31° to 60°

With Optional Heat Shield - Horizontal

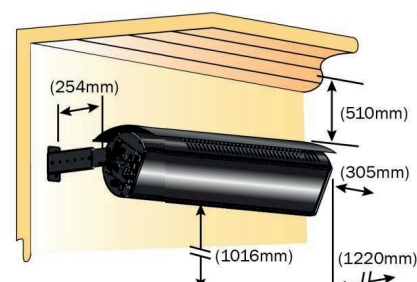
Important: Angles must be either 0°, 15°, 30°, 45° or 60°



Horizontally Mounted



Angled Mounted 15° & 30°



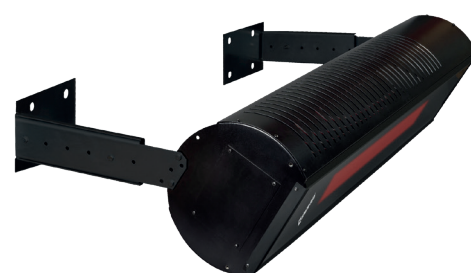
Angled Mounted 45° & 60°



Unit fitted with optional heat shield



Optional Remote Now Available



Unit fitted with optional wall mounting brackets



Tel: +44(0)1473 830 551

Fax: +44(0)1473 832055

www.spaceray.co.uk

info@spaceray.co.uk



Gas Fired Products (UK) Ltd
Chapel Lane
Claydon
Ipswich
Suffolk, IP6 0JL



Industrial & Commercial
Heating Equipment Association



FACTORIES: IPSWICH, ENGLAND - CHARLOTTE, N.C, U.S.A