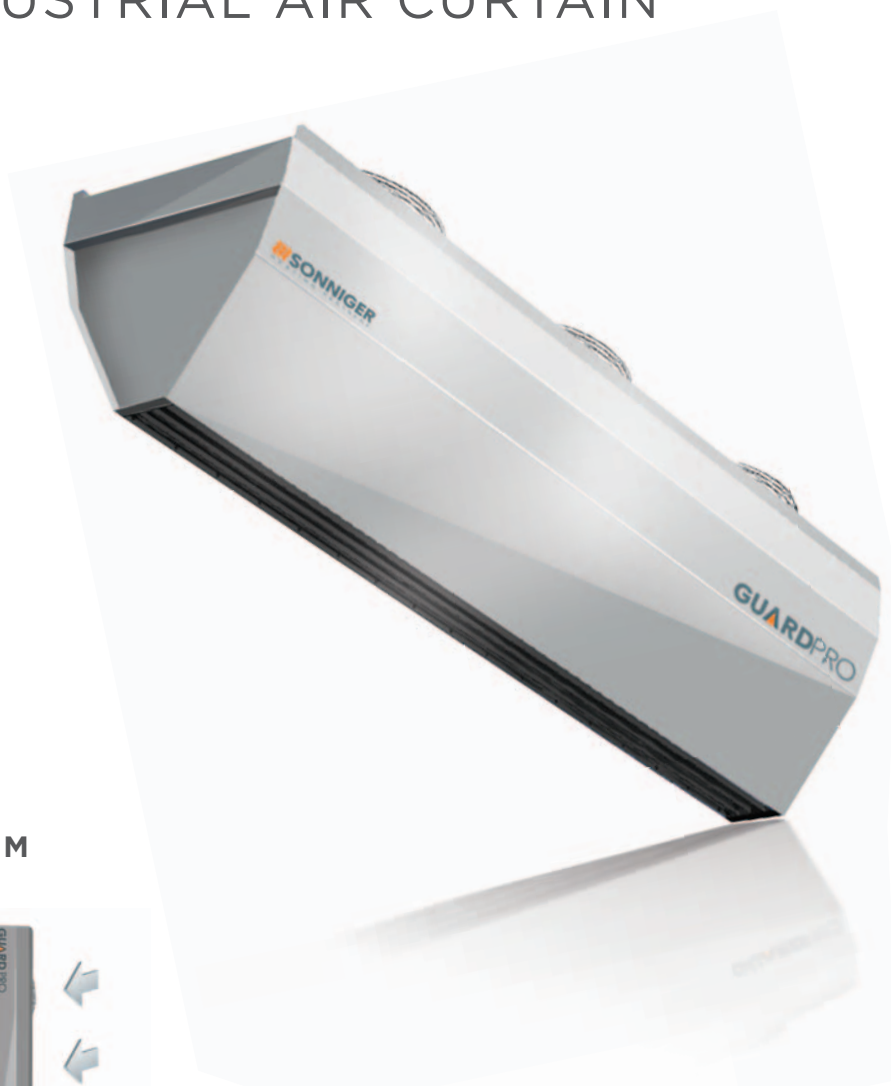


GUARDPRO INDUSTRIAL AIR CURTAIN

GUARDPRO is a line of industrial air curtains designed for protection of industrial buildings from the loss of heat energy through gateway. Air flow range up to 7,5 m thanks to high efficiency fans and modular construction.

ADVANTAGES

- Air throw up to 7,5m
- Modular system based on length of air curtains 1,5m and 2m
- Vertical or horizontal assembly
- ACTIVE PROTECTION System



ACTIVE PROTECTION SYSTEM



ACTIVE PROTECTION system improves effectivity of air bareer which protects entrance doors.

ACTIVE PROTECTION SYSTEM helps to save energy supplied for heating of air curtains. Main principle is to install GUARDPRO with water heater at the bottom and GUARDPRO without a coil at the top. Hot air leaving bottom curtain will move into upper side and will create temperature comfort for users. In this case only bottom curtain is supplied with heating medium, it gives substantial savings on operating costs.

AUTOMATIC CONTROL



Doorstop

- Starts operation of curtain when door opens



SPEEDER

- Air exhaust regulation



CONTROLBOX

- Complete electrical connection box

INDUSTRIAL AIR CURTAIN

TECHNICAL DATA	WATER CURTAINS		ELECTRIC CURTAINS		COLD CURTAINS		
	GUARD PRO 150W	GUARD PRO 200W	GUARD PRO 150E	GUARD PRO 200E	GUARD PRO 150C	GUARD PRO 200C	
	length of unit	m	1.5	2	1.5	2	1.5
max air flow range	m	7,5	7,5	7,5	7,5	7,5	7,5
heat output*	kW	33	47	14	21	-	-
max air output	m ³ /h	6 500	9 000	6 700	9 100	6 800	9 200
max working pressure	MPa	1,6	1,6	-	-	-	-
diameter of connection nozzles	inches	3/4"	3/4"	-	-	-	-
power supply	V/Hz A	230/50 2,4	230/50 3,6	230/50 2,4	230/50 3,6	230/50 2,4	230/50 3,6
motor power	kW	0,5	0,75	0,5	0,75	0,5	0,75
power consumption	V/Hz A	-	-	400/50 17	400/50 29	-	-
weight filled with water / without water	kg	46/44	62/60	45	63	37	51
protection class IP	-	IP 54	IP 54	IP 54	IP 54	IP 54	IP 54

* for water parameters 90/70°C, inlet air temperature 0°C

GUARD PRO 150W

air flow - 6500 m³/h

inlet/outlet water temperature	water 60/40 °C					water 70/50 °C					water 90/70 °C					
inlet air temperature	°C	0	5	10	15	20	0	5	10	15	20	0	5	10	15	20
heat output	kW	19,1	17,0	14,9	12,8	10,7	23,9	21,5	19,2	17,0	14,7	33,0	30,8	28,5	26,2	23,9
outlet air temperature	°C	8,8	12,7	16,7	20,6	24,5	10,5	14,5	18,6	22,6	26,5	14,3	18,2	22,2	26,2	30,2
water flow	m ³ /h	0,7	0,7	0,7	0,4	0,4	1,1	0,7	0,7	0,7	0,7	1,4	0,7	0,7	0,7	0,7
pressure drop	kPa	2,4	1,8	1,3	0,9	0,5	3,7	3,1	2,5	2,0	1,5	6,7	5,9	5,2	4,4	3,8

GUARD PRO 200W

air flow- 9000 m³/h

inlet/outlet water temperature	water 60/40 °C					water 70/50 °C					water 90/70 °C					
inlet air temperature	°C	0	5	10	15	20	0	5	10	15	20	0	5	10	15	20
heat output	kW	29,1	25,5	22,1	18,9	15,8	35,1	31,8	28,6	25,4	22,3	47,0	43,4	39,9	36,5	33,2
outlet air temperature	°C	8,7	12,7	16,6	20,6	24,6	10,4	14,4	18,4	22,4	26,4	14,1	18,1	22,1	26,1	30,1
water flow	m ³ /h	1,1	1,1	0,7	0,7	0,7	1,4	0,7	0,7	0,7	0,4	1,8	1,8	1,4	1,4	1,4
pressure drop	kPa	5,6	4,4	6,1	2,5	1,7	8,5	7,1	5,8	4,7	3,7	15,0	13,0	12,0	9,9	8,5

SPEED OF AIR FLOW

